

AD Series

LED Advertising Display

Multi-size and convenient installation method



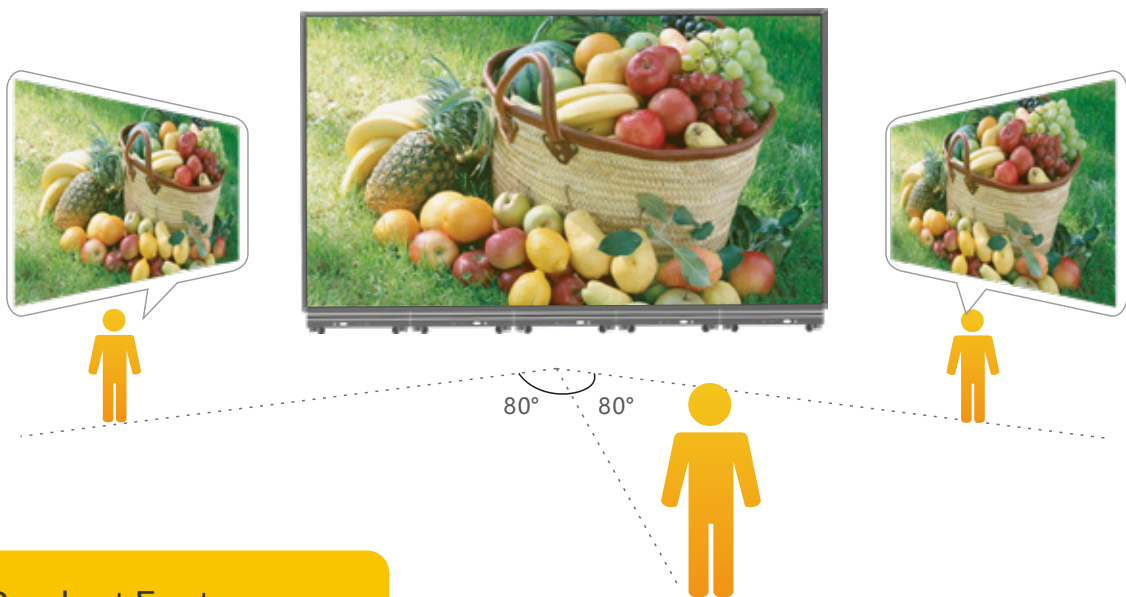
Description

The LED advertising display integrates the world's leading small pixel pitch LED technology and intelligent android system. It is widely used in airport, car station, supermarket, retail chain and other business display fields.

The ultra-thin, light weight, innovative design mirror LED screen is the latest creation for retail advertising. Compared with the traditional heavy and bulky LED advertising displays, Isemc's screen is much lighter, slimmer, and more convenient as it can be set up, relocated and operated very simply. Brighter with higher contrast compared to LCD displays makes it a perfect retail solution.

Excellent Performance

The super thin design, the thickness is 42.6mm. Fine and quality pictures and low-brightness with high grey scale. Eight-grade brightness adjustment. High definition and high brightness, vivid images, gorgeous color, good visual effect. Support Dolby 5.1 digital channel, audio and visual integration to bring a better audience experience



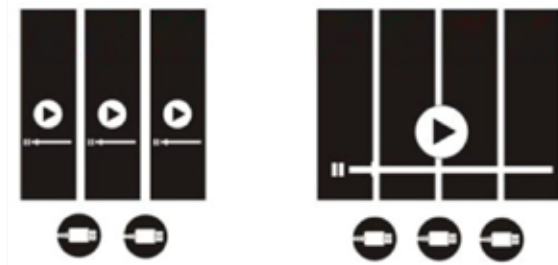
Product Features

Indoor Advertising Display

Intelligent Control

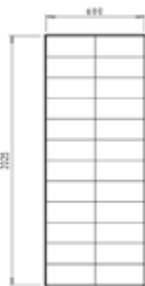
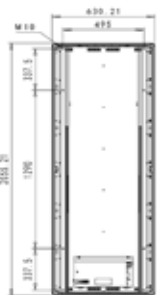
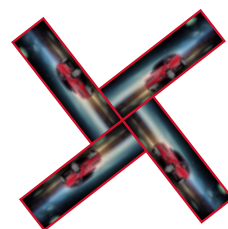
WIFI, 3G/4G, USB or HDMI wireless control etc, achieving both the synchronous and asynchronous control. Multiple poster spliced together to play video and images to meet various application and advertisement demands

Support centralized network management, remote control the display to carry out accurately targeted advertisement.



Diversification

Frame are available in various color. Hanging, standing and wall mounting are supported. Two way showing method- Horizontal and Verticality.



Convenient Use

Completely front service. Quick installation, simple operation, convenient maintenance, saving the cost greatly. Plug and play is available, automatic full play video source with extra operation. Easy and convenient.

Protections

24hour protection technology to realize functions such as, anti-collision, anti-humidity, anti-static, anti-radiation, wear-resisting, efficient heat dissipation;



Specification	Parameter	Parameter	
Physical Parameter	Lamps	SMD 1515	SMD 2020
	Pixel Pitch(mm)	1.8	2.571
	Module Resolution	160*120	112*84
	Cabinet Resolution	320*1080	224*756
	Density(dots/unit)	345600	169344
	Module Size(L*H*T mm)	288*216*6.2	
	Cabinet Size(mm)	576*1944*35	
	Cabinets Material	Aluminum	
	Modules Array	2*9	
	Weight Per Cabinet(kg)	35	
	Weight Per Modules(kg)	0.47	
Optical Parameter	Grey Scale(bit)	14	
	Refresh Rate(Hz)	3840	
	Drive Mode	1/30	
	Brightness(nit)	600-1200 adjustable	
	View Angle	H/160° V/160°	
Electrical Parameter	Input Voltage(V)	100-240	
	Current Frequency(Hz)	50/60	
	Max Power Consumption	654(unit)	
	Avg Power Consumption	218(unit)	
Application Environment	Storage Temp(°C)	-10 — +60	
	Working Temp(°C)	-10 — +50	
	Storage Humidity	10%-90%	
	Working Humidity	10%-90%	
	Protection Level	IP 30	
	Life Span(H)	100000	
	Installation Method	Hanging,Standing,Wall mounting	
Maintenance Method	Front		





Unit design and splicing freely

250mmx1000mm unit cabinet, splicing the unit by your idea and design freely. Various installation methods are available- hanging, standing, movable standing.



Low brightness with high grey scale

High quality LED lamps and PWM drive IC, go with special images arithmetic processing that make a better color performance, color rendition and more details even in low brightness mode. Excellent gray scale performance even in a 100cd/ m² brightness.

Product Features

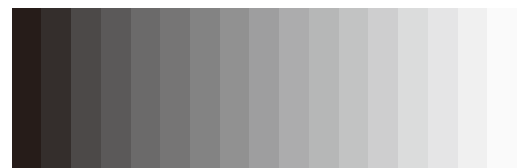
Double-sided View

Unique double-sided design LED display, customized size and frame structure for different project. The products have been welcomed and gotten the market after it appeared. It has a large range application, like, windows exhibition, super market, shopping mall, airport, to bring dual effect for target advertisement.



High Resolution

Professional Image With High Refresh Rate Up to 3840Hz high refresh rate keeps it high quality display performance even under professional camera, no water waves or screen flashing, totally meet the live show requirements.



Normal LED display Low gray scale poor performance



Diamond Series LED display low brightness, high gray scale

Specification	Parameter			
Led Lamps type	SMD 2020	SMD 2020	SMD 2020	SMD 2020
Pixel Pitch(mm)	2.5	2.604	2.976	3.91
Module Resolution	100x100	96*96	84*84	64*64
Module Size(mm)	250*250	250*250	250*250	250*250
Weight	25kg/m ²			
Cabinet Size(mm)	250x1000			
Screen Size	Customized as demands			
Frame Structure	Aluminum			
Brightness(cd/m ²)	≥800			
View Angle	(±)160°			
Gray Scale	≥14bit			
Maximum Power Consumption	800W/m ²			
Average Power Consumption	150-250 W/m ²			
Operating Power	110V/220V,50-60 Hz			
Frame Frequency	60 Hz			
Refresh Rate	≥1920 Hz			
Brightness adjustment	0-100%			
Color Temperature	3200-9300 adjustable			
Calibration	By pixel, or module, or Cabinet			
Input Signal	HDMI, DVI, VGA, S-video			
Installation method	Wall/Standing/Hanging			
Control Method	-Synchronous with PC			
Stock & Working temperature	(-40- +85°C)/ (-20-+50°C)			
Working Humidity	10-90RH			
Life Span(H)	100,000H			
Flatness	≥98%			
Maintenance Method	Front			

